

## Door Prize Donors

Albertsons

Isle of Capri

Creole Fin & Feather—  
James Ed Broussard

Johnny Janese—State  
Farm

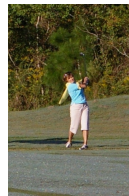
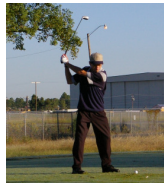
Cathy Chapman—Lee  
Wayne Corporation

Roly Poly

Daisy A Day Florist

J & R Carriage Rides

Tom Hofer—McNeese  
University



*"It's who we are....  
It's what we do!"*



**4th Annual Golf Tournament**  
**Monday, October 19, 2009**  
**Gray Plantation Golf Course**  
**Lake Charles, LA**

*Benefiting the programs of Families Helping Families of Southwest Louisiana, Inc.*

**Families Helping Families of SWLA, Inc. (FHF SWLA)** is a family-directed Resource Center for individuals with disabilities and their families.

**Our Mission:** To provide information and referral, education and training, peer support and advocacy skills to individuals with disabilities and their families.

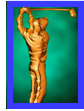
**Our Vision:** Individuals with disabilities and their families will be strong, effective, informed advocates for themselves and others.

**Tournament Title Sponsor**





## Title Sponsor—\$5000



## Masters Sponsors—\$1000

Greater Lake  
Charles Rotary Club



## Eagle Sponsor—\$500

Westlake Chemical

Entergy

Shane K. Hinch PLC



## Birdie Sponsors—\$250

Leading Health Care

Climate Control

Cameron State Bank

## Hole Sponsors

American Press

Jim Mitchell—State  
Farm Insurance

Don & Barbara Barrett

MMI Group LLC—  
Richard Morgan

Citgo (2)

Cathy Chapman - Lee  
Wayne Corporation

Northwestern Mutual

Cox, Cox, Filo, Camel  
& Wilson

Raleigh Newman (2)

Guidry's Pharmacy

Senator Willie Mount

Families Helping Families' Board of Directors and  
Staff wish to thank each and every **sponsor**,  
**golfer and volunteer** who helped make our 4th

*Annual "Fore for Families"*  
Golf Tournament a SUCCESS!

See you next year!!

