

## Families Helping Families

### A Family Directed Resource Center for Individuals with Disabilities and their Families

#### Who are we?

We are a resource center staffed by families and individuals with disabilities in the SWLA area, who, through their own experiences, are committed to reaching out to individuals with disabilities and their families.

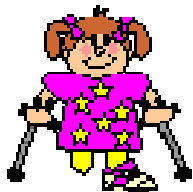
#### Mission & Vision

Our mission is to provide information and referral, education and training, peer support and advocacy skills to individuals with disabilities and their families.

Our vision is that individuals with disabilities and their families will be strong, effective, informed advocates for themselves and others.

#### Services

Being family members of individuals with disabilities or having disabilities ourselves, we provide first-hand knowledge, information and encouragement. We have a large lending library, provide direct referral to agencies and services, provide trainings and educational opportunities, and peer to peer support.



## Resource Information for Children with Special Health Care Needs

Families Helping Families  
Family to Family Health  
Information Center

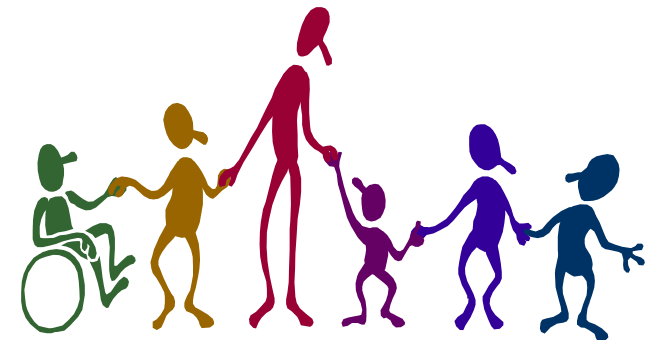


“It’s who we are, It’s what we do”

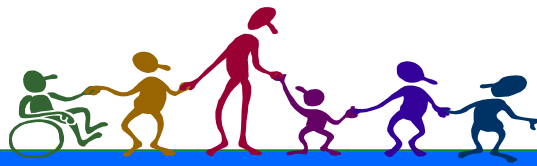
“It’s who we are, It’s what we do”

2927 Hodges Street  
Lake Charles, LA 70601  
Phone: 337-436-2570 or 1-800-894-6558  
Fax: 337-436-2578  
E-mail: fhfswla@xspedius.net

For more information about any  
information found in this brochure or about  
your child’s special healthcare needs, please  
call Mika Savoie at 337-475-4827 or  
337-436-2570.



# Resource Information



**EarlySteps** — Louisiana’s early intervention system for children 0-3 years old with developmental delays or disabilities. EarlySteps offers services in the home, at no cost to the families. Services are meant to educate families on dealing with their child’s delay.

**Call 337-475-4827 or 1-866-494-8900.**

**Medicaid/LaCHIP** — An insurance program that provides services such as doctor’s visits, immunizations, prescription medications, hospitalization, home health, dental care, personal care services, skilled nursing, transportation reimbursement, etc. to lower income families (up to 200% above poverty level).

**Call 1-888-342-6207**

Family Size	2	3	4	5	6	7	8
Gross Family income	2282	2862	3442	4022	4602	5182	5762

**Family Opportunity Act** — Provides all services Medicaid offers to children with disabilities whose family has too high an income to qualify for Medicaid (up to 300% above poverty level). Parents must use private insurance first (if offered by employer) then Medicaid will pick up all remaining expenses. There is a monthly premium of \$15 or \$35. **Call 1-888-342-6207**

Family Size	2	3	4	5	6	7	8
Gross Family Income	3423	4293	5163	6033	6903	7773	8643

\*\*Medicaid and the Family Opportunity Act allow for income deductions that may be applicable to your family. \*\*



**Supplemental Security Income (SSI)** — Monthly benefit for children 0-18 who meet Social Security’s definition of disability and *strict* income and resource limits. Children who qualify for SSI automatically qualify for Medicaid. **Call 337-433-0643 or 1-800-772-1213.**

**Children’s Special Health Services** — Provide medical diagnostic and treatment services for eligible children with special health care needs. Services include: cardiology, plastic/reconstructive surgery, orthopedic, neurology, neurosurgery, otology, urology, ophthalmology, audiology, etc. Specialists see patients at the Health Unit.

**Call 337-480-2636.**

**Office for Citizen’s with Developmental Disabilities** Provide individual and family support, support coordination, supported living, transition services, waiver services, cash subsidy, residential services, community support teams. Services provided based on the Determination Process for System Entry. **Call 337-475-8045 or 1-800-631-8810.**

**Office of Mental Health** — Provide screening and assessment, emergency crisis care, individual evaluation and treatment, medication administration and management, specialized services for children and adolescents. Inability to pay does not have an impact on the receipt of services. Eligibility determined through diagnosis and evaluation. **Call 337-475-8022.**

**Children’s Healthcare Assistance Plan (CHAP)** — Children’s Hospital of New Orleans provides assistance to families whose income is too high to qualify for Medicaid, but whose lack of resources limit their access to quality healthcare. Family’s income cannot exceed 350% above poverty level. **Call 1-800-299-9511.**

**Medically Needy Spend Down (MNP)** — The MNP is designed to provide Medicaid coverage when an individual’s or family’s income exceed the established limits of a categorical assistance program but is not sufficient to meet medical needs according to MNP standards. MNP could pay up to 3 months prior to or from the month of application, if the family’s out of pocket expenses total 3 times the family’s monthly income. **Call 1-888-342-6207**

**Shriner’s Children’s Services** — Children 0-18 with a medically necessary condition may qualify for medical services through one of the many Shriner’s Hospitals. Income is considered, but medical necessity is the first priority for eligibility. Pays for transportation, food, hotels, in addition to the medical services. **Call 337-436-9782 or 1-800-237-5055.**

**United Healthcare Children’s Foundation** — Non-profit charity funded by United Healthcare that provides financial assistance for families whose insurance does not cover medically necessary services for their children. Families income cannot exceed \$20,000 per family member and other resources are not available. **Call 1-800-328-5979, ext. 24459.**

**Partner’s for Prescription Assistance, Louisiana** — A website to provide low income or uninsured people with free or discounted medications. [www.pparxla.com](http://www.pparxla.com) or **call 1-888-477-2669.**

**\$4 Generic Drug Program** — Wal-mart, Target, and Kroger offer many generic drugs for \$4. Go to their websites to check it out or call your local store.